

# Investing in our future

At SLC Management, we believe that investing in infrastructure equity can deliver long-term value for our clients, meeting society's fundamental needs.

By 2040, the global demand for new infrastructure investment is projected to reach a staggering \$68 trillion\*. Central to this investment requirement is the infrastructure middle-market.

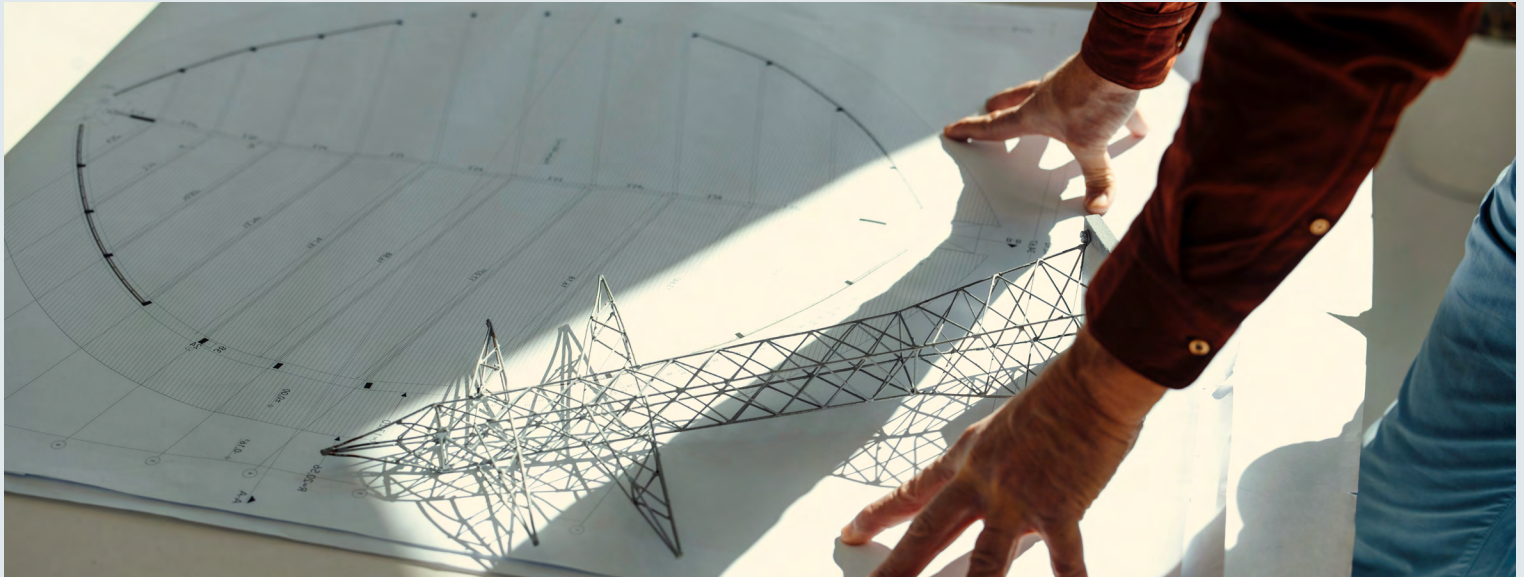
Our proven infrastructure asset manager, InfraRed Capital Partners (InfraRed), is ideally positioned in today's environment.

InfraRed invests across mature economies in essential middle-market infrastructure, from digital, energy, and social assets to transport and utilities.

Their approach has been crafted over the past 25 years and is ideally matched to the infrastructure opportunities that lie ahead.

## Discover more:

[slcmanagement.com](https://slcmanagement.com)  
[ircp.com](https://ircp.com)



\*Global Infrastructure Hub (gihub.org), a G20 initiative. SLC Management is the institutional asset management business of Sun Life Financial Inc. under which Sun Life Capital Management (U.S.) LLC and Sun Life Capital Management (Canada) Inc. operate. BentallGreenOak, InfraRed Capital Partners, Crescent Capital Group and Advisors Asset Management are also part of SLC Management. This information is intended for institutional investors only and not intended to provide specific financial, tax, investment, insurance, legal or accounting advice and should not be relied upon and does not constitute a specific offer to buy and/or sell securities, insurance or investment services. For more information, visit [slcmanagement.com](https://slcmanagement.com). SLC-20250422-4416577